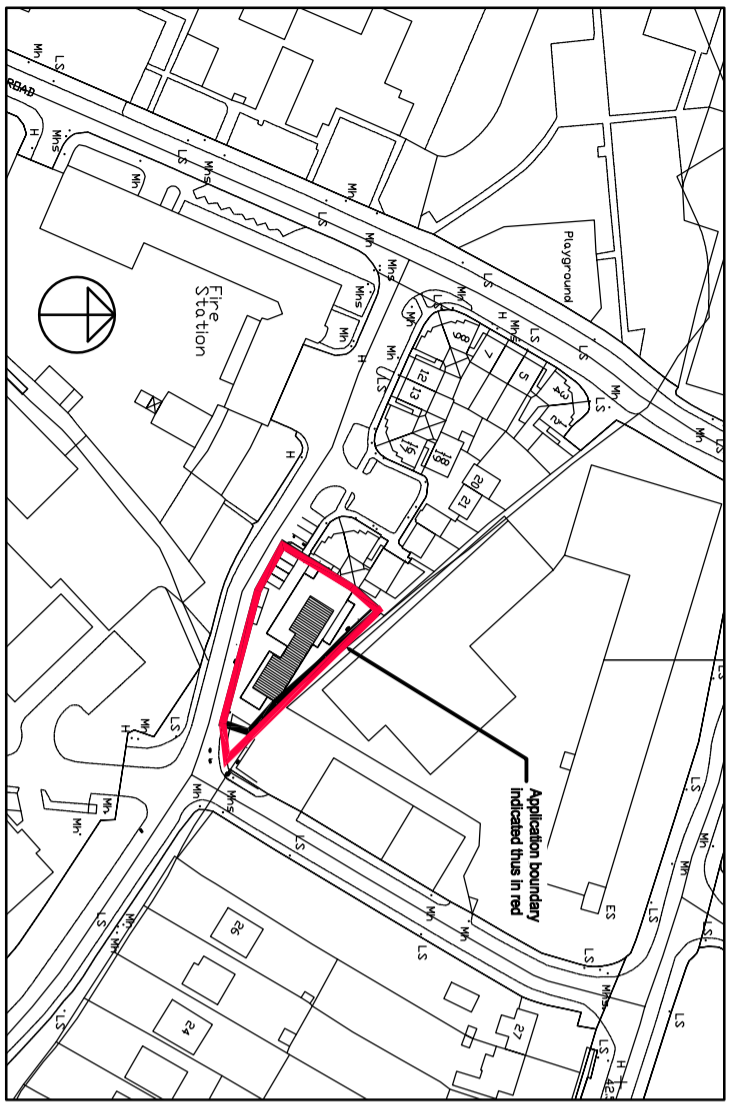


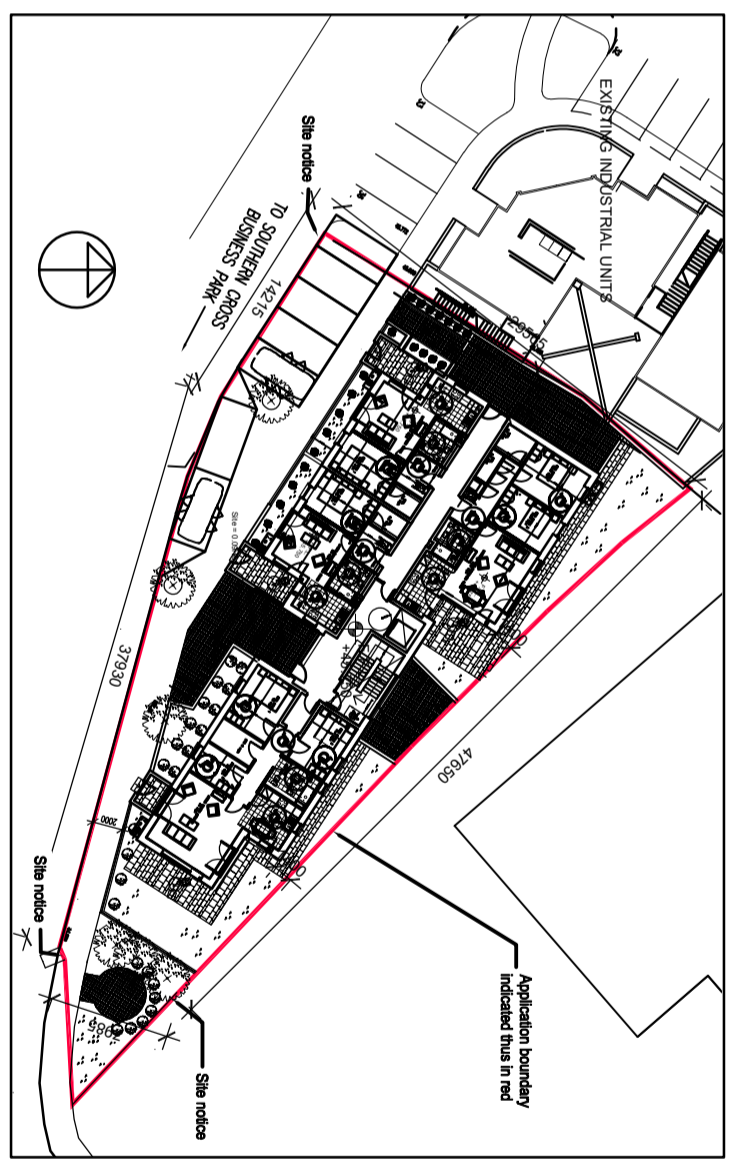
ELEVATION TO FRONT, SOUTH WEST
SCALE 1:250 (@A1)



SITE LOCATION PLAN
SCALE 1:1000

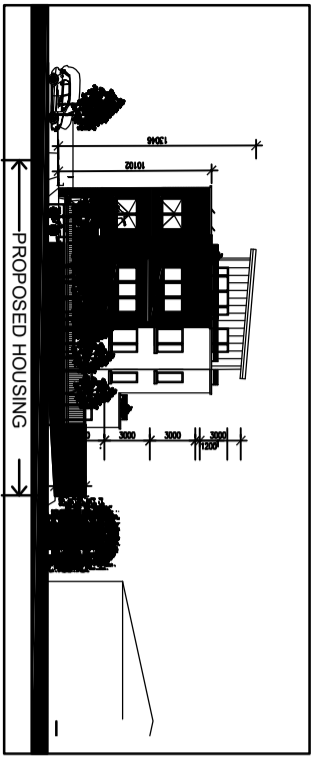
ZONING RE (EXISTING RESIDENTIAL),
(SITE AREA EXISTING CEDAR COURT : 0.378 HA SITE WITH 29 UNITS)
(= 7.7 Units /Ha)

SITE AREA = 0.09 Ha
Allowable Floor Area = 7.7x125 x 0.9 = 866msq
PROPOSED 280MS PER FLOOR ON 3 FLOORS, PLUS 100 ROOF
Proposed Floor Area = 910 msq



SITE PLAN
SCALE 1:250

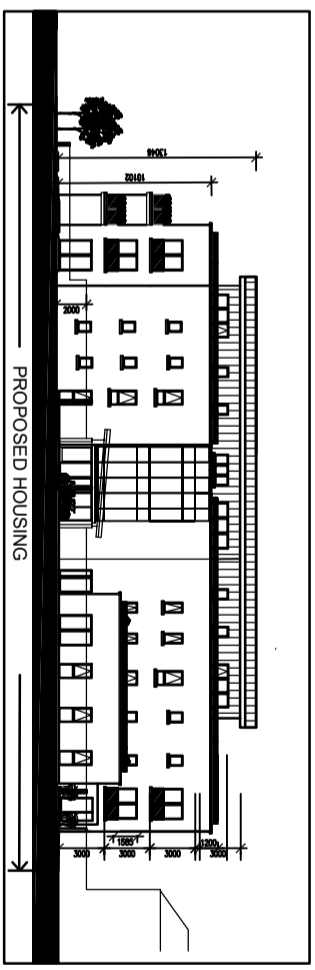
SCHEDULE OF HOUSES / LEGEND		TOTAL MSQ PH I
8 NO	1 BED	(8*49.5) = 396 msq
3 NO	2 BED	(3*79) = 237msq
3 NO	3 BED	(3*100) = 300msq
TOTAL NUMBER 1,2,3 = 14 Apartments		TOTAL = 910 msq



ELEVATION TO SIDE, SOUTH EAST
SCALE 1:250



ARTISTS IMPRESSION, TO SOUTH
(MODEL)



ELEVATION TO REAR, NORTH EAST
SCALE 1:250

**PART 8
PLANNING
(SHEET 1 OF 4)**
Cedar Court,
Bray,
Co. Wicklow.



EXISTING AERIAL VIEW OF SITE

REVISIONS:	
#BY:	DATE: DESCRIPTION
0. DC	4.2.20 PRES TO BRAY MD
1. DC	8.5.20 ISSUE TO ENG FOR ST. 1 APPLICATION.
2. DC	17.6.20 TO D.O.E. STAGE 1/2 APPLICATION
3. DC	19.9.20 PART 8 PLANNING APPLICATION



WICKLOW COUNTY COUNCIL

HOUSING CONSTRUCTION
COUNTY BUILDINGS
WICKLOW

TEL: 0404 - 20100
FAX 0404 - 67792

E-MAIL: casec@wicklowoco.ie www.wicklow.ie

JOB: ***4234, CEDAR CT. II HOUSING**

TITLE: **SITE LOCATION & PLAN G.A.**

SCALE:	AS NOTED	Date:	Fall 2019
DWG NO:	91114234-P8_1.	design:	99099
SHEET SIZE:	A1		
STATUS:	PART 8	REV	3